



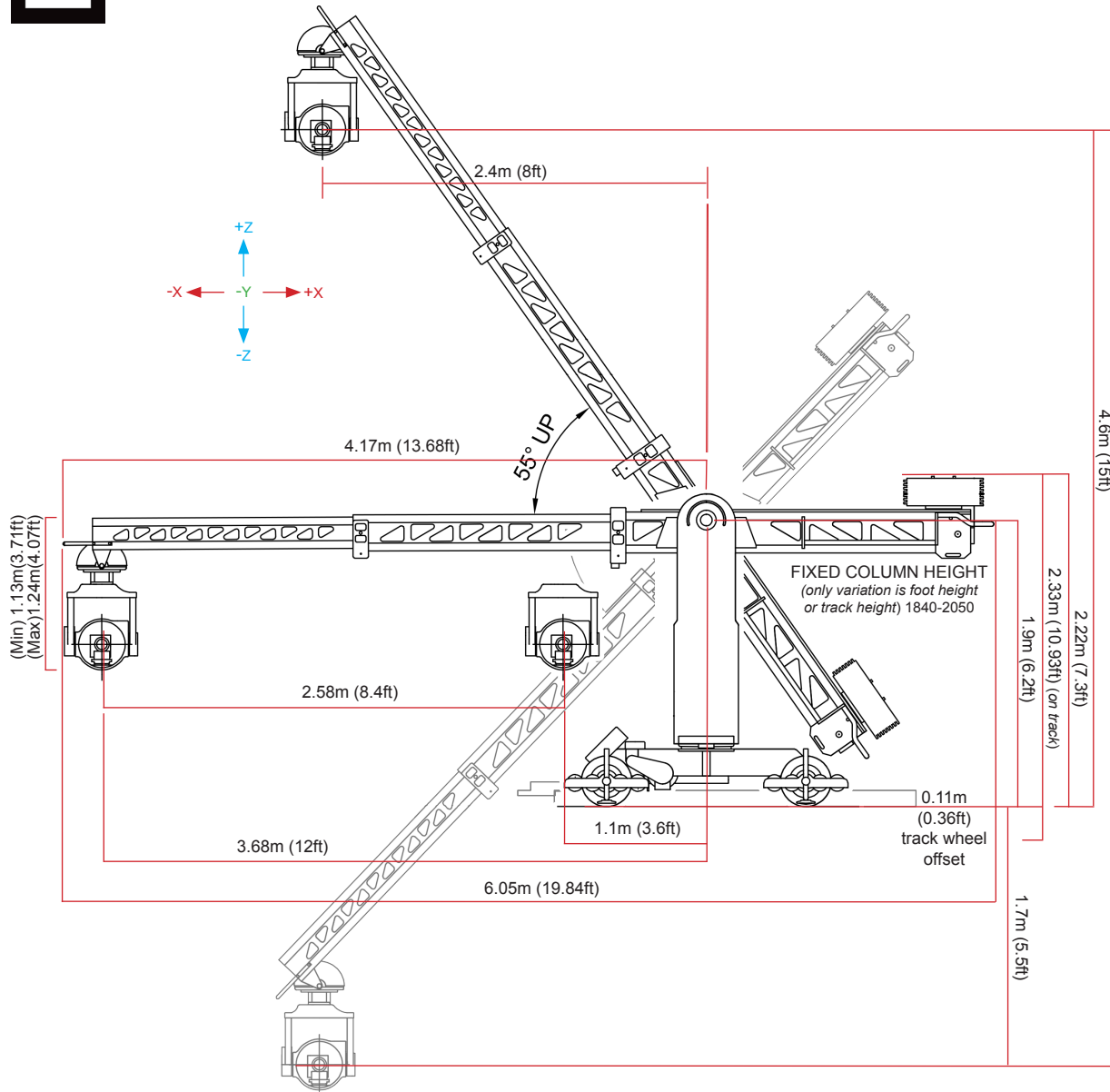
SANDSTORM FILMS

TECHNODOLLY

TECHNODOLLY 15 & 25 - SIZES AND SPECIFICATIONS - AUGUST 2025



TECHNODOLLY 15



LENS HEIGHTS:

Max. lens height (from ground/rostrum when on track):	4.6m (15ft)
Max. lens height down (when on rostrum):	-1.7m (-5.5ft)
Max. low to high camera travel:	6.3m (20.5ft)

TELESCOPE DISTANCES:

Max. telescopic extent (from column centre to lens):	3.68m (12ft)
Min. telescope extent (from column centre to lens):	1.1m (3.6ft)
Total telescope travel (linear telescope only):	2.58m (8.4ft)

PAYLOADS (WHEN IN OPERATION):

Max. camera weight:	35kg (77lbs)
Total weight (in action when weighted excluding track):	1100kg (2425lbs)
Track weight (per 3m section - 6 sections of track max):	50kg (110lbs)

S-HEAD SPECIFICATIONS (sizes in cm only):

Inner diameter with roll for camera body (circumference):	25cm
Inner diameter with flat-plate (removes roll and 3 rd gyro axis):	29cm(w) x 40cm(h)
Tightest position (from auto-horizon to base plate):	59cm (compromises tilt)
Longest position (from auto-horizon to base plate):	70cm (Allows max tilt)
Furthest off-axis sensor position (forwards):	100cm
	(it works but it is not pretty)

Underslung as standard, we only recommend the TechnoDolly 25 for over-slung.

There is no matrix option.

TechnoDolly cannot operate as a fully repeatable crane without the S-head included.

TRAVEL/TRACKING SPEED:

Max travel speed avg. using all axis on the crane:	2.4m/s
	(the TechnoDolly takes time to reach this speed).
Assumed avg. speed (on track, all axis in motion):	1.5m/s (4.9ft/s)

COVERAGE AREA:

Max track length (in 3m track sections only):	18m (59ft)
Approx. max travel utilising all 6 track and arm extents:	21m (68ft)
	(Traveling in a straight line)

Max travel depends on the exact shot and shouldn't be calculated based on this data sheet.

USEFUL NOTES:

Tele. measurements based on electronic limits for keyframe moves.

If the crane is being used as a repeatable crane only, we can often slightly extend the lengths and limits.

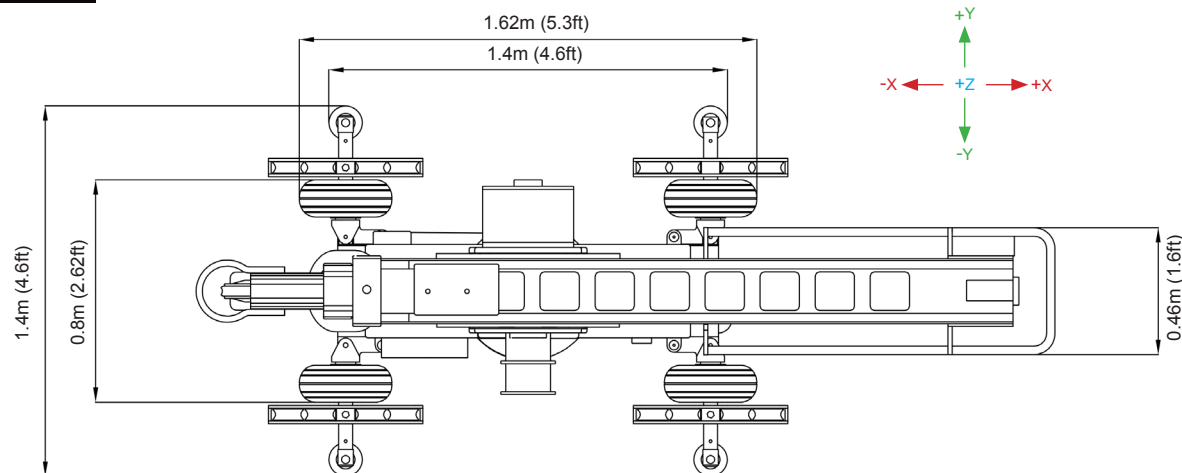
Measurements below 'ground level' assume a suitable rostrum has been built with adequate space for the crane and operator (also track if required). Recommended minimum size is 3x3m platform that is heavily re-enforced to handle inertia from crane movement.

Specifications and Dimensions based on TechnoDolly 15 from Sandstorm serial number 426 with the S head fitted.

Measurements based upon safe operation of the crane with the latest software for reliable repeatability as of **AUGUST 2025**.



TECHNODOLLY 15



TRANSPORT POSITION:

All measurements on this page refer to the crane when packed down in transport position, the sizes should not be used for measuring suitability for the shot, only access / transport / movement.

Minimum Crane weight: 750kg
Average Crane weight: 1000kg

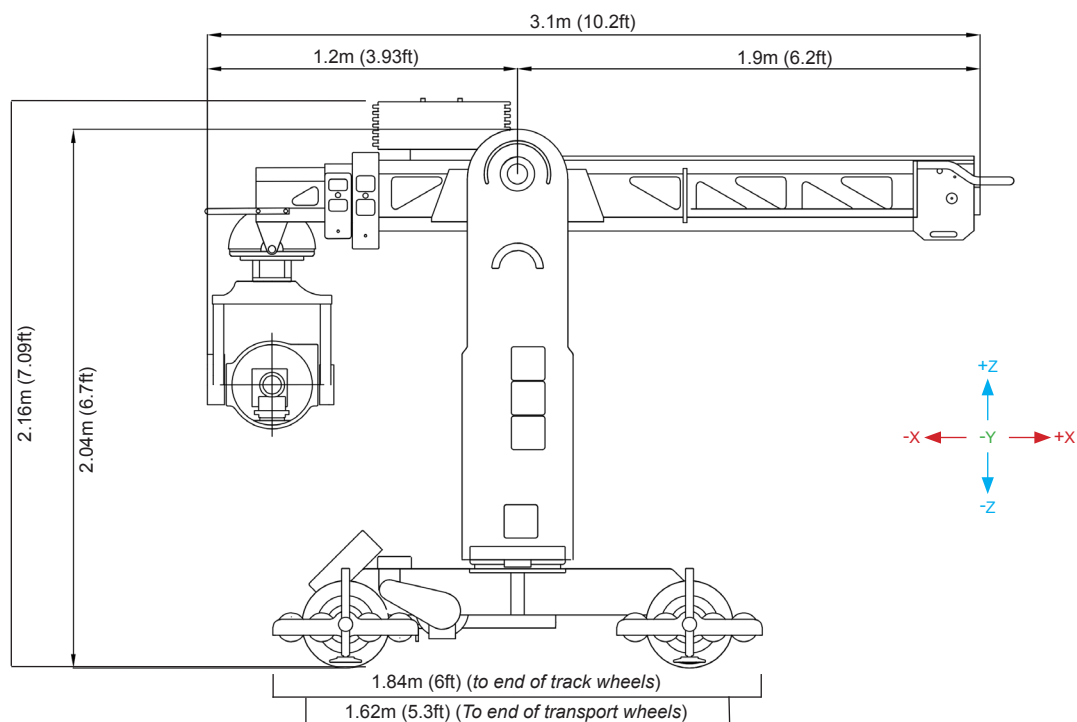
The arm and column cannot be detached.
The column is a fixed height.

The TechnoDolly can be handled by crane, telehandler or 360 using suitably rated strops which Sandstorm can provide.

ROSTRUMS:

The TechnoDolly works well from a fixed or temporary rostrum to achieve a larger range of movement.

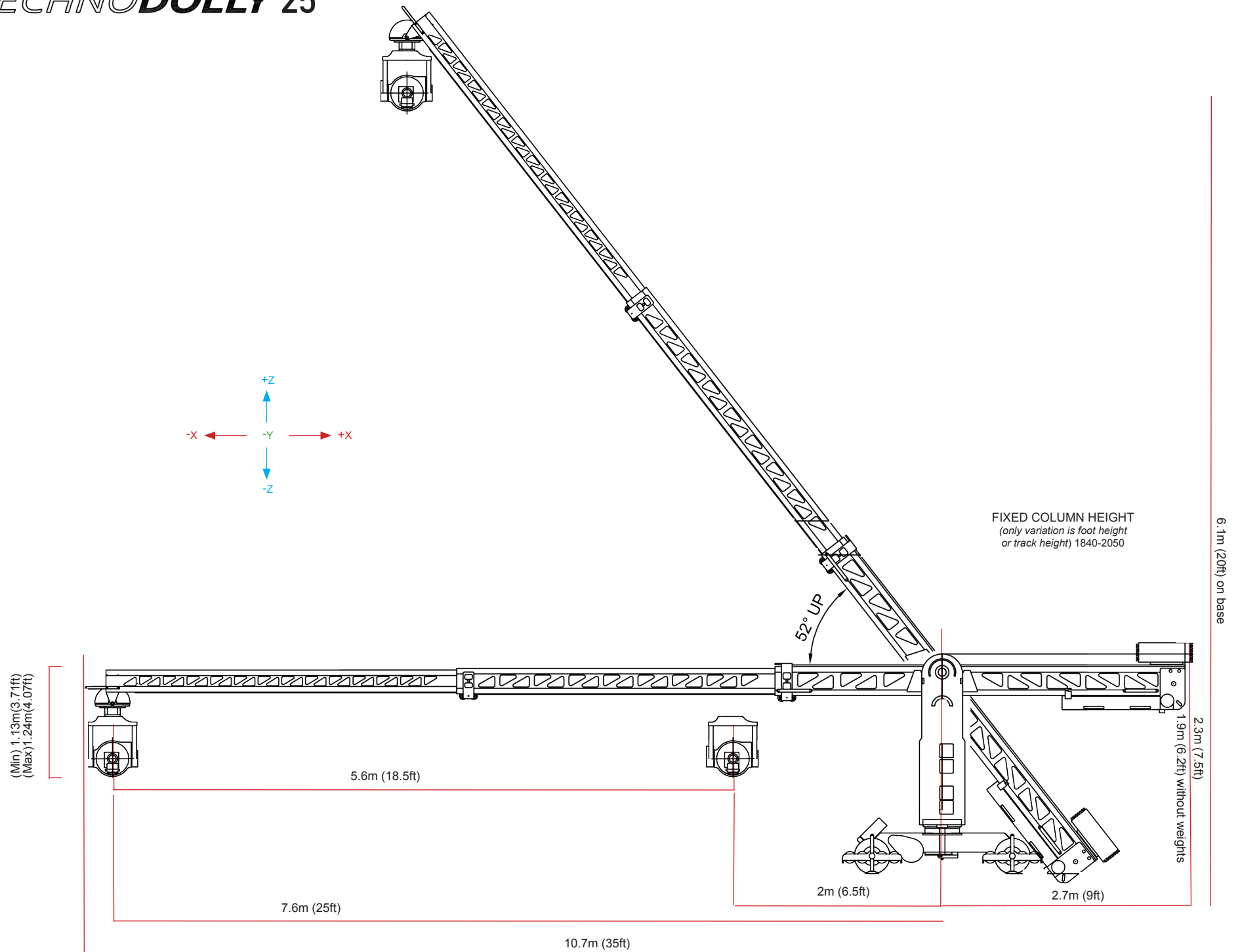
The platform must be able to support the weight of the crane, plus weights, plus operators (often two), plus track. A minimum of 3x3m is required + 3m per additional section of track + hand rails around sides and rear (*no front hand rail is required*).



*Specifications and Dimensions based on TechnoDolly 15 from Sandstorm serial number 426 with the S head fitted.
Measurements based upon safe operation of the crane with the latest software for reliable repeatability as of **AUGUST 2025**.*

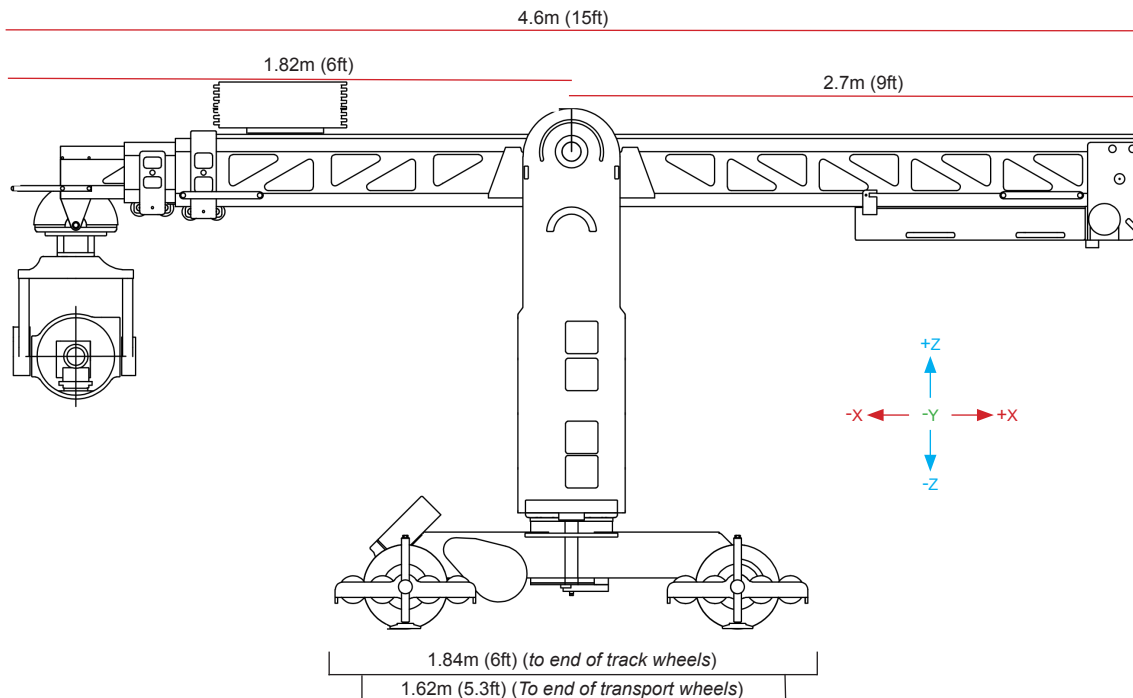
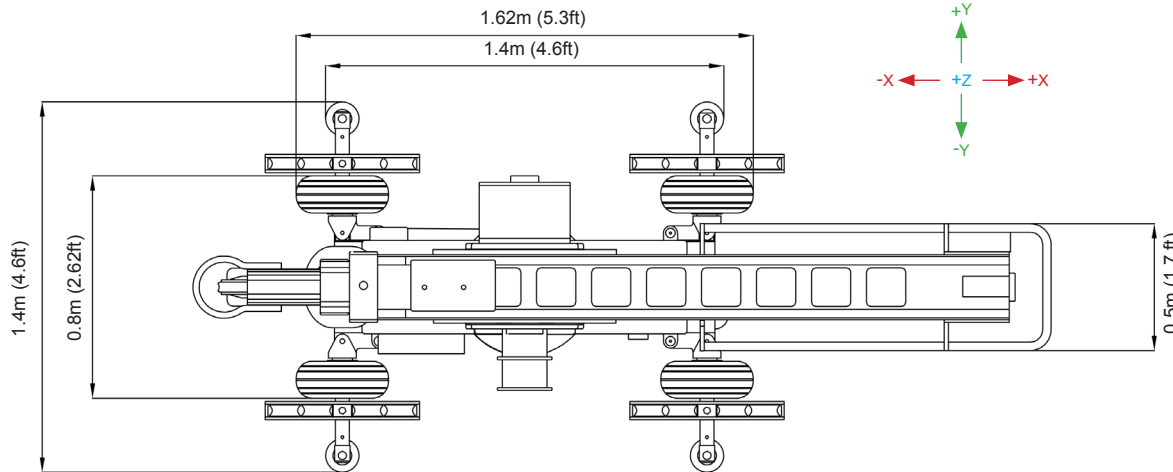


TECHNO**DOLLY** 25





TECHNODOLLY 25



LENS HEIGHTS:

Max. lens height (from ground when on base):	6.1m (20ft)
Max. lens height (from ground when on track*):	6.7m (22ft)

TELESCOPE DISTANCES:

Max. telescopic extent (from column centre to lens):	7.6m (25ft)
Min. telescope extent (from column centre to lens):	2m (6.5ft)
Total telescope travel (linear telescope only):	5.6m (18.5ft)

PAYLOADS (WHEN IN OPERATION):

Max. camera weight:	35kg (77lbs)
Total weight (in action when weighted excluding track):	1100kg (2425lbs)
Track weight (per 3m section - 6 sections of track max):	50kg (110lbs)

S-HEAD SPECIFICATIONS (sizes in cm only):

As on TechnoDolly 15 page (identical head)
Underslung as standard, we only recommend the TechnoDolly 25 for over-slung.
 There is no matrix option.
 TechnoDolly cannot operate as a fully repeatable crane without the S-head included.

TRAVEL/TRACKING SPEED:

Max travel speed avg. using all axis on the crane:	2.4m/s (the TechnoDolly takes time to reach this speed).
--	---

COVERAGE AREA:

Max track length (in 3m track sections only):	18m (59ft)
Approx. max travel utilising all 6 track and arm extents:	21m (68ft) (Traveling in a straight line)
Max travel depends on the exact shot and shouldn't be calculated based on this data sheet.	

TRANSPORT POSITION:

All measurements on this page refer to the crane when packed down in transport position, the sizes should not be used for measuring suitability for the shot, only access / transport / movement.

Minimum Crane weight:	1000kg
Average Crane weight:	1500kg

The arm and column cannot be detached.
 The column is a fixed height.

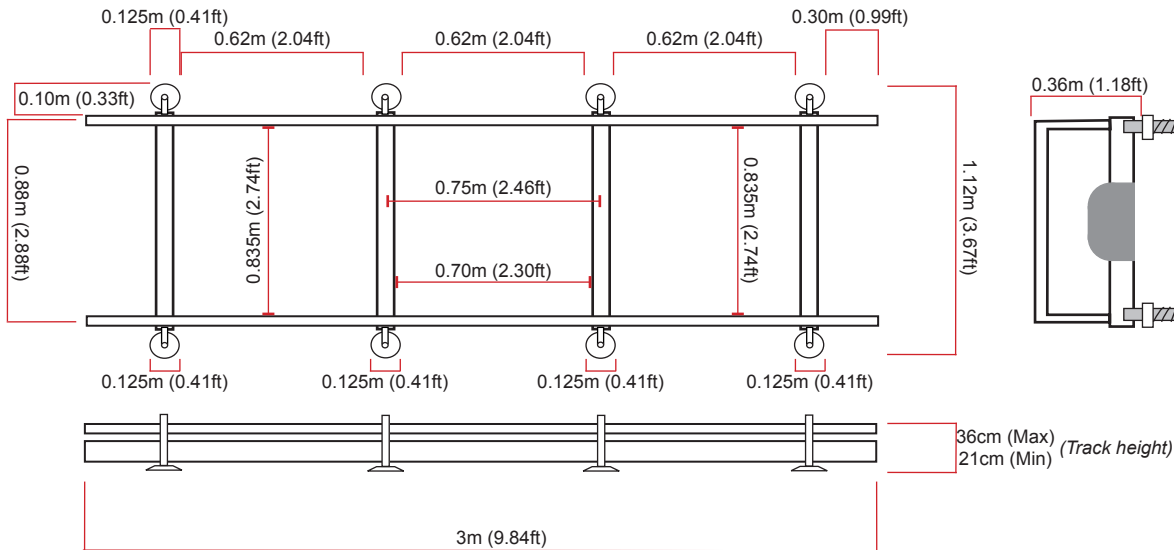
The TechnoDolly can be handled by crane, telehandler or 360 using suitably rated strops which Sandstorm can provide.

ROSTRUMS:

The TechnoDolly works well from a fixed or temporary rostrum to achieve a larger range of movement.



TECHNODOLLY



TRANSPORT:

Our TechnoDolly is transported in a custom built luton low-loader without Taco. This vehicle is **required** on-site / location / studio at all times. The vehicle is EURO6 for ULEZ.

For the TechnoDolly 25, we deliver in two low-loader luton vans due to weight.

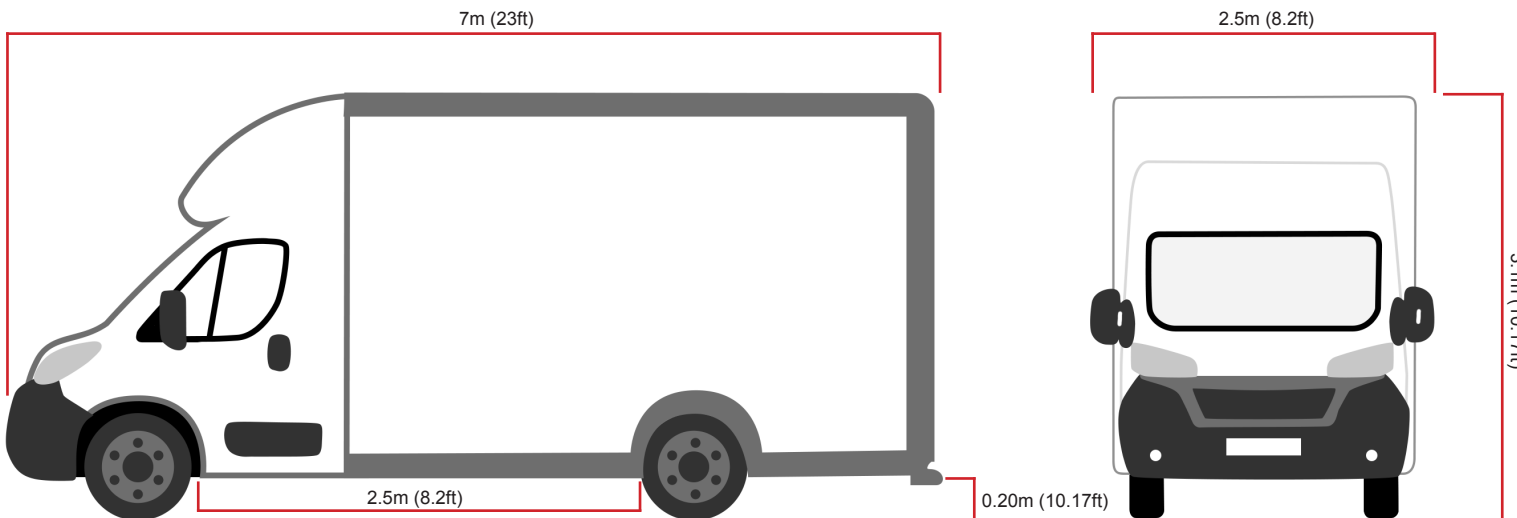
TRACK (6 Lengths total):

Sections are ALL 3m long, there are no short / half sections. All track is re-enforced and has adjustable feet for ground leveling.

Total length of track: 18m (59.1ft)
(full length cannot be extended beyond this)

Total length of track with stops attached: 18.72m (61.42ft)

Any adjustments over 15cm require PAGS or staging.



Images not to scale



*TECHNO***DOLLY**

For further information please contact Sandstorm Films:

Jenny Chapman for bookings:

bookings@sandstormfilms.com

+44 (0)207 127 4664

Tom Ward for technical:

welcome@sandstormfilms.com

+44 (0)207 127 4664

The Technodolly is available for studio and location hire.

We also offer studios, crew, cameras, lenses, lights, rigging and set build options, all available onsite at Sandstorm Films.

sandstormfilms.com

sandstormfilms.com/technodolly-hire/

Sandstorm Media Ltd . Ealing Studios . London . W5 5EP . UK