

# SANDSTORM FILMS

## RATE CARD

DEC 2023

UK PRODUCTION FACILITIES  
STUDIOS, KIT, CREW & POST

### STUDIO HIRE

Studio day = 8am - 6pm  
Overtime = 10% of day rate total per hour

First time studio hires may require a Sandstorm studio assistant for setup (charged per hour).

Please check our kit list for full list of cameras, lights, distro, stands, grip, sound, even autocue. All available to hire with or without operators.

### STUDIO 1 - £500

1360ft<sup>2</sup> / 126m<sup>2</sup>

44ft x 31ft x 10ft / 13.5m x 9.5m x 3.2m

### STUDIO 2 - £300

970ft<sup>2</sup> / 90m<sup>2</sup>

30ft x 33ft x 13ft / 9m x 10m x 4m

### STUDIO 3 - £1,000

5600ft<sup>2</sup> / 520m<sup>2</sup>

85ft x 65ft x 33ft / 26m x 20m x 10m

### TECHNODOLLY

The Technodolly is completely unique. A fast, portable, fully repeatable camera crane and near silent motion control system. It exists to speed shoots up, save you money and produce beautiful, organic visuals almost instantly.

Available in the studio and on location with 60ft of track and pricing includes operators.

In our studios from

**£3,000**

On location with operators and transport from

**£4,500**

### PACKAGES

Combine our studios, cameras, grip and crew to maximise your production budget. Shooting at Sandstorm has never been so affordable, comprehensive or flexible.

**READY TO SHOOT - ALEXA MINI + COOKE S4i SET - £700**

**READY TO SHOOT - ALEXA 35 + MASTER PRIMES - £1,200**

**BASIC STAGE, KIT & CREW EXAMPLE - £8,000**

Alexa Mini + Cooke S4i's full set w/accessories  
Skypanels (6 lights), Studio 3 stage including distro, power, electrical team, camera dept and DIT.

**COMMERCIAL EXAMPLE - £25,000**

All the bits you'd expect on a mid-sized commercial shoot: Alexa, QTake playback, lighting and electricians, small set build. You bring director and DOP we do the rest.

## CAMERA LIST

Arri Alexa Mini 4K	£300
Arri Alexa 35	£700
Arri Alexa Mini LF	£800
Phantom Flex 2k	£400
Canon 5DS	£100
Sony FX30	£80

This is NOT our full list of cameras. All accessories available including Preston MDR4 + WCU4 follow focus, Ambient time-code, monitors, matte-boxes, tripods, dollies and grip. See kit list on website.



## LENSES

Cooke S4i 9 lens kit (12mm, 18mm, 25mm, 32mm 40mm, 50mm, 75mm, 100mm, 135mm)	£600
Arri Master Prime lens set (T1.3 18mm, 25mm, 35mm, 50mm, 75mm)	£400
Arriflex Super Speed prime lens set (T1.3 35mm, 50mm, 85mm)	£400
Cooke S4i 3 lens kit (see above for options)	£300
Cooke Anamorphic/i prime lens set (32mm, 65mm macro, 135mm)	£300
Arri Master Macro 100mm	£150
Sigma Art Prime Lens set (14,20,35,50,85)	£150

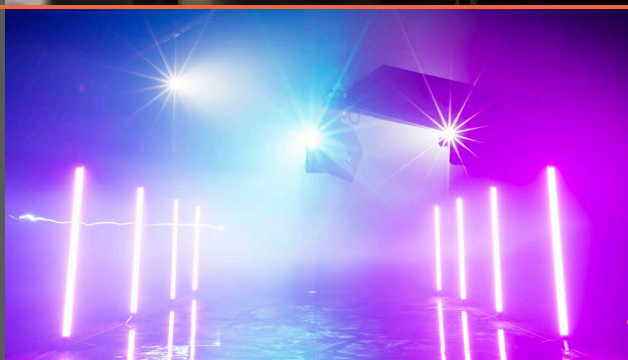


## LIGHTING

With over 200 lights on-site we have almost every scenario covered. Package deals available. Distro, lighting desk, DMX and full accessories and consumables.

See the kit list for full info.

Arri Skypanel S60-C (S30 + S360 also available)	£120
Astera Titan 8 light kit (Helios also in house)	£180
Arri Orbiter Kit w/Fresnel	£200
ArriSun 6K HMI (18K, 2.5, 1.2, 575 also available)	£200
Aputure 600D (full accessories)	£50
Tour Hazer (don't leave home without it)	£25
Broncolor Strobe Kit (full stills bundle)	£200



## IN-HOUSE CREW

We can provide crew as well as facilities from our in-house team. No travel or accommodation needed. \* includes kit

Photographer (incl. rights)	£800
Director of photography	£800
Assistant director	£500
Producer	£500
Production manager / Line producer	£500
Production assistant	£300
Camera operator	£500
Focus puller (1st AC)*	£500
Gaffer	£500
Spark / electrician	£300
Lighting desk operator*	£500
Audio technician / sound recordist*	£500
Video operator / Qtake op	£400
DIT	£400



Art director	£600	Scenic painter	£400
Props master	£400	Make-up artist	£500
Set builder	£400	Studio assistant	£300



## POST-PRODUCTION

With over 20 workstations on-site we cover all elements of post: Edit / Grade / VFX / CGI / Audio  
Centralised rendering and storage  
With Maya, Adobe & Resolve software

Day rate	£900
Hour rate	£200
FTP use / asset management	F.O.C

Stereo Mix - 30"	£100
5.1 & 7.1 Mix - 30"	£200
Dolby Cinema Delivery	£120

Day rate = 8 hours per op



## OTHER COOL STUFF

We believe in making the production experience as painless as possible.

Remote viewing suitable for all platforms

Playback - Q Take on-site with operators

GrandMA3 lighting control

Full DIT & data backup on-site

Grip department including O'Connor + Eleack

Set building - complete offering on-site

Props - if its here there is no fee for use

Telehandler, cherry picker, scissor lift



## SUPERTECHNO 10+ & 50+

Our in house Supertechno 10+ and 50+ are available when the repeatability of the Technodolly isn't required or when you need that extra reach. Available in the studio and on location.

In our studios from just

**£300** (for 10ft)

On location with two operators and transport from

**£1,500**



## LOCATION WORK

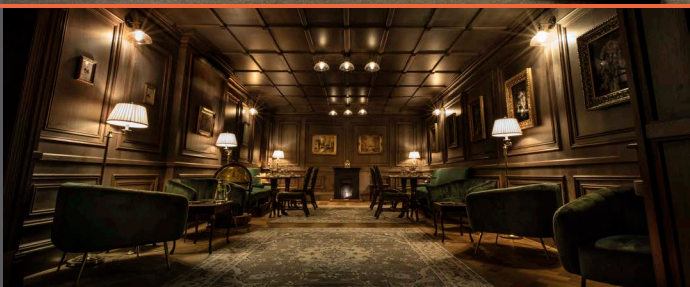
Sandstorm aren't just a studio production solution. We have a number of location vehicles, portable generators, easy-up gazebos and 4x4 all-terrain vehicles to bring our production values to any corner of the globe.



## DRINKS & CATERING

Pay as you go or pre-order from our incredible kitchen. Food can be served in boxes or plates to preference and enjoyed in Director Club too.

	per person
Breakfast including smoothie	£15
Lunch including afternoon treats	£15
Dinner	£15
Barista service - full day all inclusive	£15







Nestled on the edge of the Cotswolds and less than a minute from Junction 15 on the M4, West of London. Sandstorm provide international rates without the hassle of travel.

**SANDSTORM**  
The Old Dairy  
Badbury  
Wiltshire  
SN4 0EU

+44 (0)1672 642042  
[bookings@sandstormfilms.com](mailto:bookings@sandstormfilms.com)

## TRAVEL TIPS

Closest train station  
SWINDON (15 min taxi ride)

FROM LONDON:  
CAR = M4 West 60-90 min  
TRAIN = Paddington 45-65 min

FROM HEATHROW:  
CAR = M4 West 45-60 min  
TRAIN = 90-110 min

Public transport to Sandstorm can be expensive, the car is (regrettably) preferable. Ample on site parking.

Remote viewing is available on all shoots

If you need any more help, call Jenny Chapman in bookings. She is the fount of all (Sandstorm) knowledge.



## A UNIQUE EXPERIENCE

Alongside the headline acts; three incredibly versatile studios and the A-Z of cinema-quality kit, you also get a supporting cast of experienced production crew, restaurants, comfortable lounges and cutting-edge post-production.

Barista and chef service  
Lounges & green room  
Meeting rooms, café & restaurant  
Make-up & wardrobe incl. backwash basins  
Showers, massage therapy area & sauna  
Full postproduction and delivery

VR TOUR AVAILABLE ON THE WEBSITE

## ACCOMMODATION

We have a wide range of accommodation options locally to cater for all budgets, we also subsidise rates and provide a mini-bus service if you book through Sandstorm.

**AFFORDABLE LOCAL OPTIONS:**  
Alexandra Park (Pool & Gym) - Swindon, SN4 0OJ  
Holiday Inn Express - Swindon West, SN5 8UD

**PREMIUM LOCAL OPTIONS:**  
Barnsley House, Cirencester  
Ramsbury Bell, Ramsbury

